

FINNIFTY INDEX

12 AUGUST 2024

About Index

The Nifty Financial Services Index is designed to reflect the behaviour and performance of the Indian financial market which includes banks, financial institutions, housing finance, insurance companies and other financial services companies. The Nifty Finance Index comprises of 20 stocks that are listed on the National Stock Exchange (NSE) with high weightage like HDFC (30.39%), ICICI (21.34%), AXIS (8.28%), SBI (8.73%).

Portfolio characteristics

No. of Constituents	20
Launch Date	September 07, 2011
Base Date	January 01, 2004
Index Rebalancing	Semi-Annually

Fundamentals

PE RATIO	16.74
P/B RATIO	3.42
DIVIDEND YIELD	0.88
BASE VALUE	1000

Top constituents by weightage

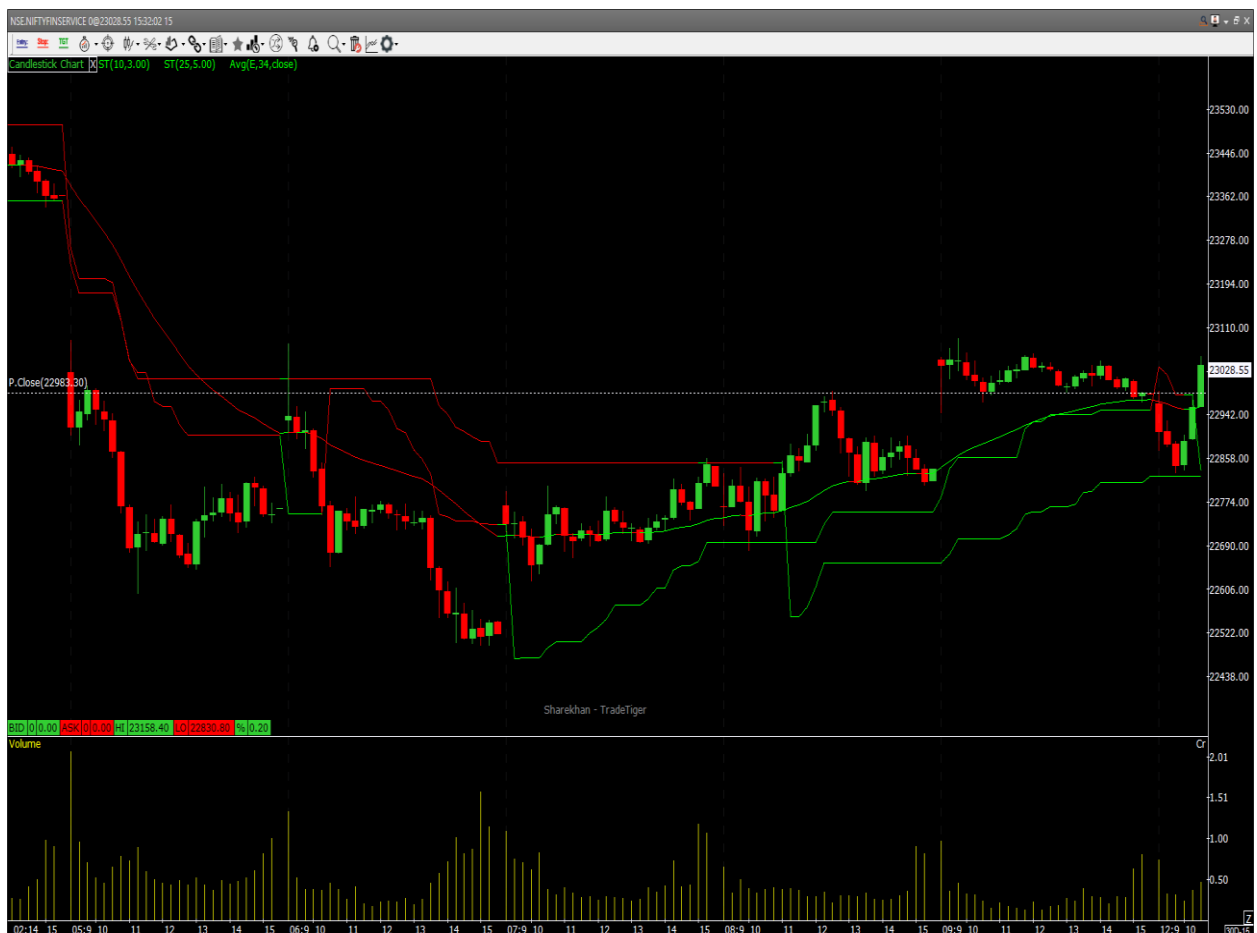
HDFC Bank Ltd.	30.39
ICICI Bank Ltd	21.34
State Bank of India	8.73
Axis Bank Ltd	8.28
Kotak Mahindra Bank Ltd	6.93
Bajaj Finance Ltd	4.94
Bajaj Finserv Ltd	2.34
Shriram Finance Ltd	2.13
Power Finance Corporation Ltd	2.11
REC Ltd	2.08

Our recommendation

OPTIONS INSIGHT: BUY FINNIFTY 23000 CALL BETWEEN 155-160 TARGETS 215-274 STOP LOSS BELOW 118

Technical analysis

Finnifty recovered from lower levels after forming bullish engulfing pattern on 15 min chart. It also bounced back from the support of Super Trend Indicator. Then Finnifty formed three white soldiers pattern where candles have formed higher highs and higher lows. The Index was also trading above moving average and expected to break the day's high with high volume. So Buy recommendation was given in Finnifty 23000 Call Option.



Disclaimer

I, Ruchi Nahar, SEBI Registered Research Analyst (INH000014544) comply with the qualification and certification requirements under SEBI (Research Analyst) Regulations, 2014. I have qualified CA, CS and MBA, has over 11 years of experience in MNCs, culminating as Head of Finance. I now leverage my expertise to guide stock market investors with strategic insights. All of the views expressed in research reports and recommendations issued by me reflect my personal views about the subject company or companies at the given point of time and I do not receive/accept any kind of compensation, directly or indirectly related to specific recommendations or views expressed in reports issued by me. I/my relatives do not at any point of time of issuing the reports have any material conflict of interest in the subject company neither I was/am/will be engaged in market making activity for the subject company. The investments discussed or views expressed in reports and recommendations issued by me may not be suitable for all investors. The user assumes the entire risk of any use made of this information. I nor any person connected with my report, accepts any liability arising from the use of research document. The recipients of research document should rely on their own investigations and should consult their own financial advisors to determine merit and risks of such investments based on their own risk appetite. Price and value of the investments referred to in this material may go up or down. Past performance is not a guide for future performance. Certain transactions including those involving futures, options and other derivatives as well as non-investment grade securities involve substantial risk and are not suitable for all investors. Reports and recommendations based on technical analysis centres on studying charts of a stock's price movement and trading volume, as opposed to focusing on a company's fundamentals and as such, may not match with a report on a company's fundamentals. Opinions expressed in research reports & recommendations will be based on the current opinions as of the date appearing in research report & recommendations. While I endeavour to update on a reasonable basis the information discussed in research reports, there may be regulatory, compliance, or other reasons that prevent me from doing so. Prospective investors and others are cautioned that any forward-looking statements are not predictions and may be subject to change without notice. So far as reports include current or historic information, it is believed to be reliable, although its accuracy and completeness cannot be guaranteed. Investment in securities market is subject to market risks. Read all the related documents carefully before investing. Registration granted by SEBI, and certification from NISM in no way guarantee performance of the intermediary or provide any assurance of returns to investors.